



## Rectangle Ball Linear Rail

In an effort to meet customer's requirement and service needs Saivs offers several different types of guides. We supply the HG series which is suitable for CNC machineries, the EG series for automation industries, the RG series for high rigidity applications, and the miniature series, MGN/MGW, for medical devices and semiconductor equipment.

### - Series: HG, EG, RG, GG, MG Series

#### **HG Series**

##### (1) Self-aligning capability

By design, the circular-arc groove has contact points at 45 degrees.

HG series can absorb most installation errors due to surface irregularities and provide smooth linear motion through the elastic deformation of rolling elements and the shift of contact points. Self-aligning capability, high accuracy and smooth operation can be obtained with an easy installation.

##### (2) Interchangeability

Because of precision dimensional control, the dimensional tolerance of HG series can be kept in a reasonable range, which means that any blocks and any rails in a specific series can be used together while maintaining dimensional tolerance. And a retainer is added to prevent the balls from falling out when the blocks are removed from the rail.

##### (3) High rigidity in all four directions

Because of the four-row design, the HG series linear guideway has equal load ratings in the radial, reverse radial and lateral directions. Furthermore, the circular-arc groove provides a wide-contact width between the balls and the groove raceway allowing large permissible loads and high rigidity.

#### **EG Series**

The design of the EG series offers a low profile, high load capacity, and high rigidity. It also features an equal load rating in all four directions and self-aligning capability to absorb installation error, allowing for higher accuracies. Additionally, the lower assembly height and the shorter length make the EG series more suitable for high-speed, automation machines and applications where space is limited.

The retainer is designed to hold the balls in the block even when it is removed from the rail.

Email: [seol@saivs.com](mailto:seol@saivs.com)

Website: [www.saivsautomatic.com](http://www.saivsautomatic.com)



### **RG Series**

The design principle of RG series linear guide is the same as that of HG series linear guide, but the roller replaces the steel ball, increasing the rolling contact line length, and at the same time, the diagonal distance between the two lanes is increased, further increasing the torque and rigidity. However, when there is lateral torque, the steel ball guide will have a small amount of angle buffer adjustment, but the roller guide will only produce a small amount of roller variation, still maintaining high accuracy and rigidity. Under the superposition of the two, load capacity, rigidity, life are far beyond the ball guide. In addition, the requirements for the erection datum plane of roller linear guide is higher than ball linear guide.

### **GG Series**

The design of the GG Series Linear Guideway is four-row circular-arc groove type with high load capacity, high rigidity, and high torsional impedance. It features load ratings in the radial, this specification can be matched with the newest sliding rail dustproof fittings.

### **MG Series**

Tiny and light weight, suitable for miniature equipment. All materials for block and rail, including rolling balls and ball retainers, are in special grade of stainless steel for anti-corrosion purpose. Gothic arch contact design can sustain loads from all directions and offer high rigidity and high accuracy. Steel balls will be held by miniature retainer to avoid balls from falling out even when the blocks are removed from the rail installation. Interchangeable types are available in certain precision grades.

# SAIVS



MGW,Linear Motion,Linear Guidew...



MGN,Linear Motion,Linear Guidew...



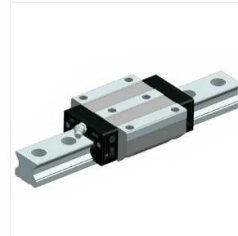
GGW-CC,Linear Motion,Linear Guid...



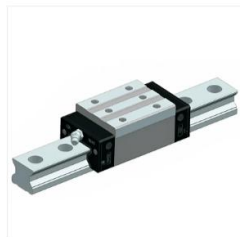
GGH-CA,Linear Motion,Linear Guid...



RGL-CA/RGL-HA,Linear Motion,Lin...



RGW-CC/RGW-HC,Linear Motion,Li...



RGH-CA/RGH-HA,Linear Motion,Li...



EGW-SB/EGH-CB,Linear Motion,Lin...



EGW-SC/EGH-CC,Linear Motion,Lin...



EGH-SA/EGH-CA,Linear Motion,Lin...



HGL-CA/HGL-HA,Linear Motion,Lin...



HGW-CC/HGW-HC,Linear Motion,L...



HGH-CA/HGH-HA,Linear Motion,Li...

For more information and customization options, please contact us. Our Rectangle Ball Linear Rail are designed to meet the needs of various industries and applications, providing versatility and durability for your projects.

Email:[seol@saivs.com](mailto:seol@saivs.com)  
Website:[www.saivsautomatic.com](http://www.saivsautomatic.com)