



Radial Bearings

Radial bearing is dominated by an inner and outer sphere within a spherical outer ring, can withstand a greater load. According to their different types and structures that can withstand the radial load, axial load or radial, axial joint load. Since the inner surface of the outer sphere inlaid composite materials, so that the work can be generated in the bearing self-lubricating. Generally used for slower swing movement, but also for the tilt angle within a certain range of motion, when the supporting shaft and shaft misalignment large shell hole, still work properly. Self-lubricating auxiliary bearing joints used in water conservancy, specialized machinery and other industries.

- Series: GE..ES, GEG..ES, GE..UK, GEBK..S, GE..C, GE..HO, GE..UK-2RS, GE..FW-2RS, GEZ..ES-2RS, GE..LO Series

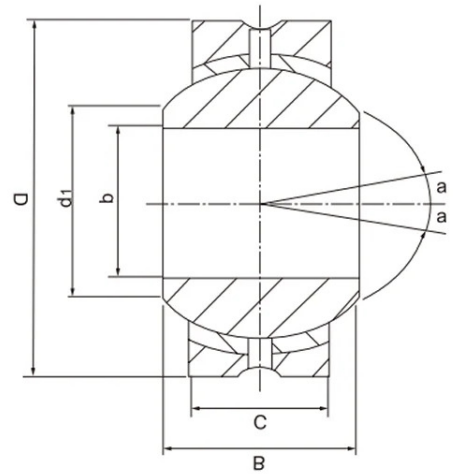
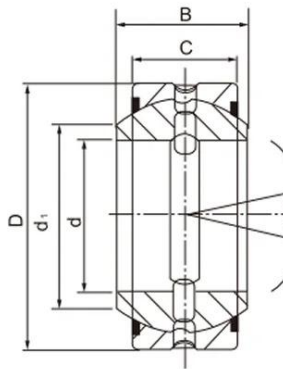
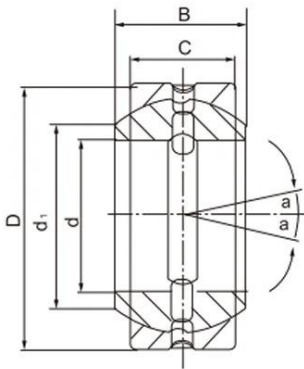
- Features:

1. Bearings with a stretching rod, stretching with right or left-hand male thread.
2. To plate zinc on the surface of rod body, the housing with a lubrication hole or a grease nipple.
3. Rod ends permissible operating temperature, are available on - 30 °C to + 80 °C temperature range of use, and keep the right to bear ability.

- Application:

Joint bearings are widely used in hydraulic engineering, metal forming machine tools, construction machinery, automation equipment, automotive shock absorbers, irrigation machinery and other industries.

SAIVS



For more information and customization options ,please contact us. Our Radial bearings are designed to meet the needs of various industries and applications, providing versatility and durability for your projects.